

Dynamic City Culture

City Community Services
and Culture Committee

Ilia Houridis, Director City Shaping
Jennifer Kalionis, Associate Director
City Culture



CITY OF
ADELAIDE



On 21 February 2023, the City Community Services and Culture Committee resolved to:

Schedule for the next meeting a workshop to discuss the current community services and culture policy provisions, other opportunities available to Council for expansion and future timetable to review existing policies.

City Community Services and Culture Committee
Key Questions

What are your
policy and
community
outcome
priorities?

Are there any
strategic or policy
gaps?

City Community Services and Culture Committee Community Profile



15.5 sq km
TOTAL LAND AREA



7.6 sq km
PARK LANDS AREA



**CROWNE
PLAZA HOTEL**
TALLEST BUILDING



\$20.9b
GROSS REGIONAL
PRODUCT



25,551
CITY RESIDENTS



11,519
BUSINESSES



148,639
LOCAL JOBS



17.9%
CITY'S SHARE OF SA
ECONOMY



1.2 million
DOMESTIC AND
INTERNATIONAL VISITORS



14,660
PRIVATE DWELLINGS



50%
HOUSEHOLDS ARE
RENTERS

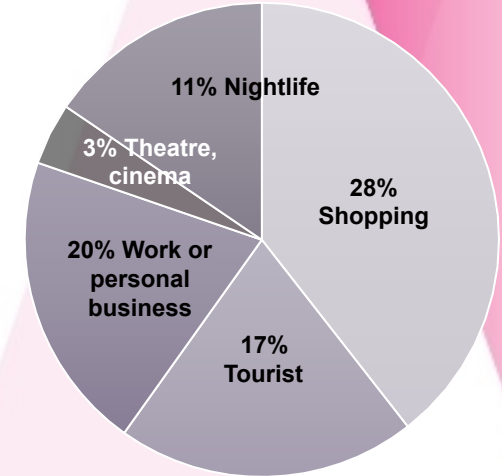


1.8
AVERAGE HOUSEHOLD
SIZE



37%
DWELLINGS ARE
OWNED/MORTGAGED

REASONS FOR VISITING THE CITY



321,500
DAILY VISITORS

Data Sources:
2022 City User Profile Report – McGregor Tan
2021 Tourism Research Australia
City of Adelaide Community Profile – profile.id
City of Adelaide Economic Profile – economy.id
City of Adelaide Business by Industry – economy.id

City Community Services and Culture Committee Community Profile



11,372
RESIDENTS BORN
OVERSEAS



20 – 24
LARGEST AGE GROUP
(6,190)



6,922
BOTH WORK & LIVE IN
THE CITY



44 %
LONE PERSON
HOUSEHOLDS



19%
RESIDENTS VOLUNTEER



878
PLACES TO EAT AND
DRINK

28%
IN GREATER ADELAIDE



36%
SPEAK A LANGUAGE
OTHER THAN ENGLISH



46,364
POPULATION BY
2041



95
LIVE MUSIC VENUES

52 %
OF CITY RESIDENTS
ARRIVED IN AUSTRALIA IN
THE FIVE YEARS PRIOR TO
2021



8%
HOUSEHOLDS ARE
COUPLES WITH
CHILDREN



37.3%
BACHELOR OR HIGHER
DEGREE QUALIFICATION



643
PUBLIC ART
INSTALLATIONS

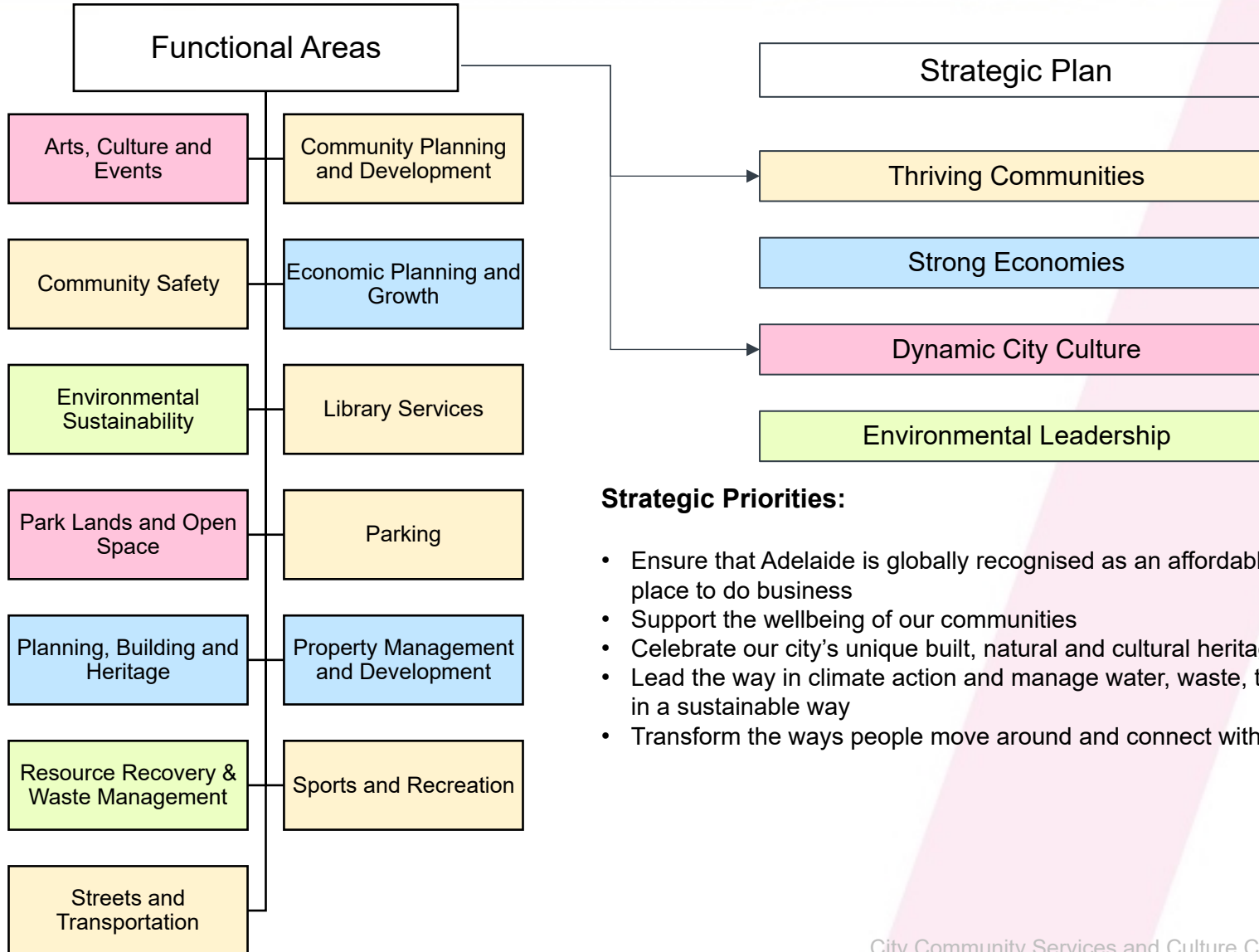
Data Sources:
2022 City User Profile Report – McGregor Tan
2021 Tourism Research Australia
City of Adelaide Community Profile – profile.id
City of Adelaide Economic Profile – economy.id
City of Adelaide Business by Industry – economy.id

City Community Services and Culture Committee Definitions / Strategic Context



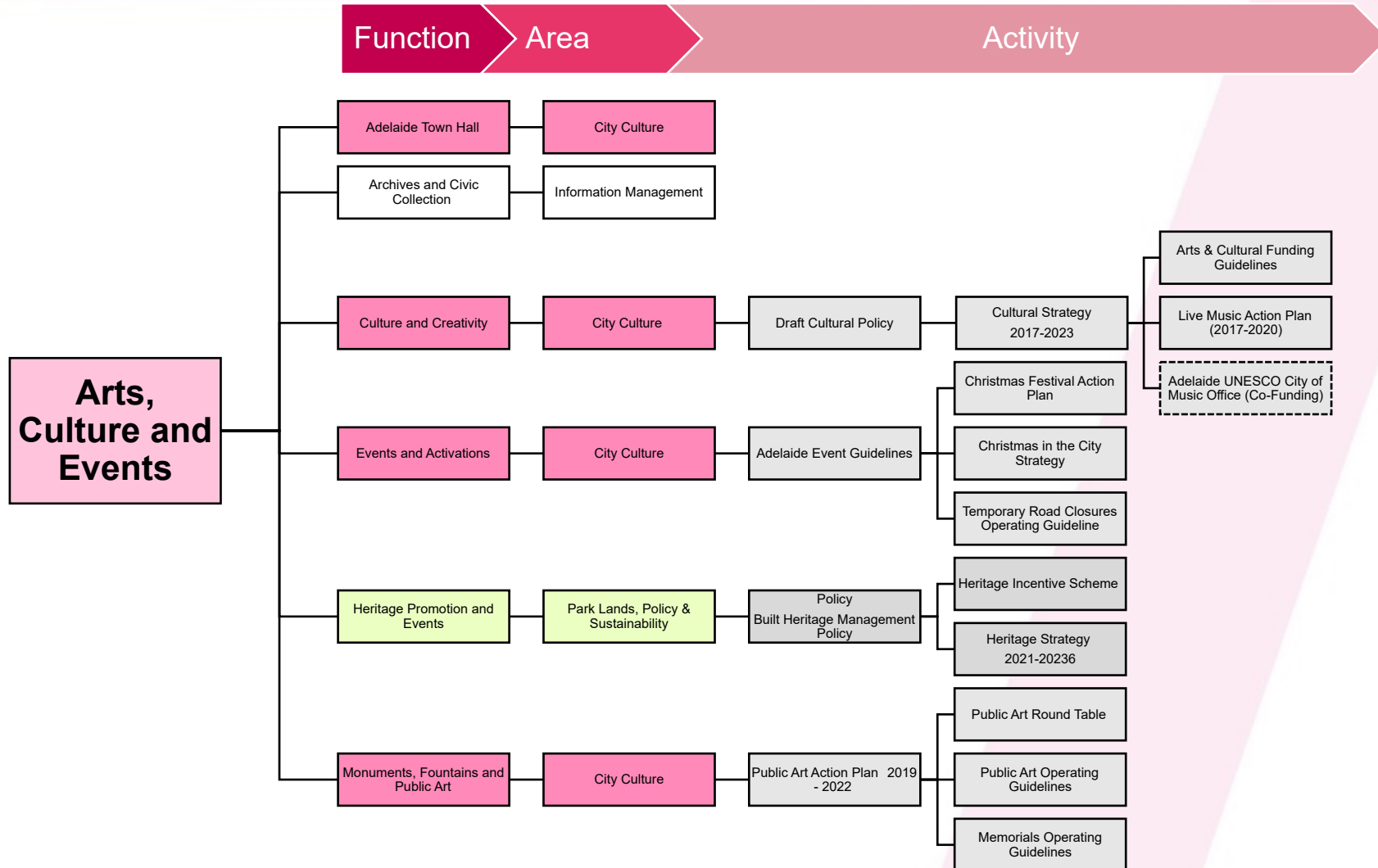
City Community Services and Culture Committee

Community Services



City Community Services and Culture Committee

Arts, Culture and Events



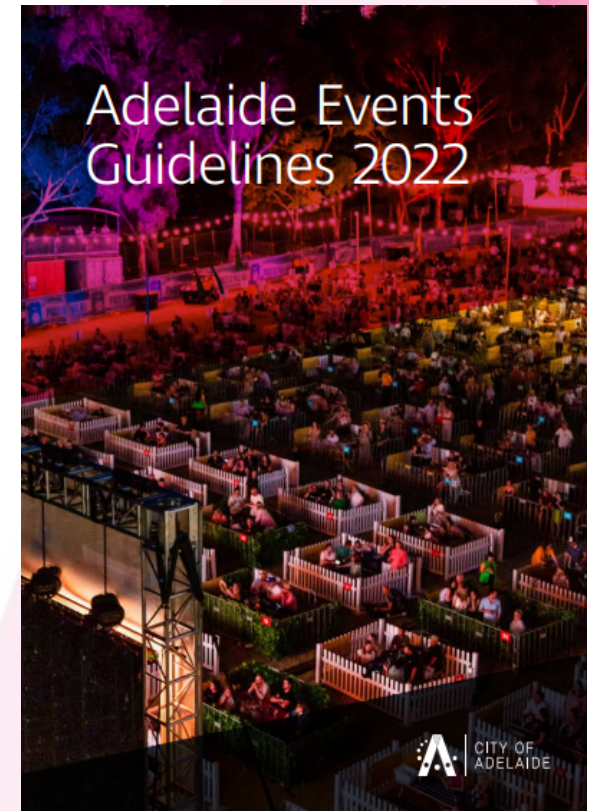
City Community Services and Culture Committee Arts, Culture and Events

For review in 2023:



ADELAIDE: CITY OF ART

Public Art Action Plan 2019-2022



City Community Services and Culture Committee Arts, Culture and Events



HERITAGE INCENTIVES SCHEME

THE CITY OF ADELAIDE IS PROUD TO HAVE MANY BUILDINGS, STATUES, BRIDGES AND SPACES IDENTIFIED AS HERITAGE PLACES.

We also acknowledge the unlisted historic character buildings, which occupy and add value to our city streets. The City of Adelaide is focused on conserving these places in partnership with their owners.

Since 1988, the City of Adelaide has provided the most substantial local government heritage related funding scheme in Australia, the Heritage Incentives Scheme (HIS). The Scheme reimburses owners with a proportion of the costs involved in retaining, reinforcing and reinstating the heritage significance of State, Local and Character places which meet specific scheme requirements and in accordance with the Burra Charter.

If you own a heritage listed or historic character property, find out if you are eligible for City of Adelaide's free expert advice and financial support today by reading through this information flyer.

08 8203 7185
h.mail@cityofadelaide.com.au
cityofadelaide.com.au/heritage

CITY OF ADELAIDE

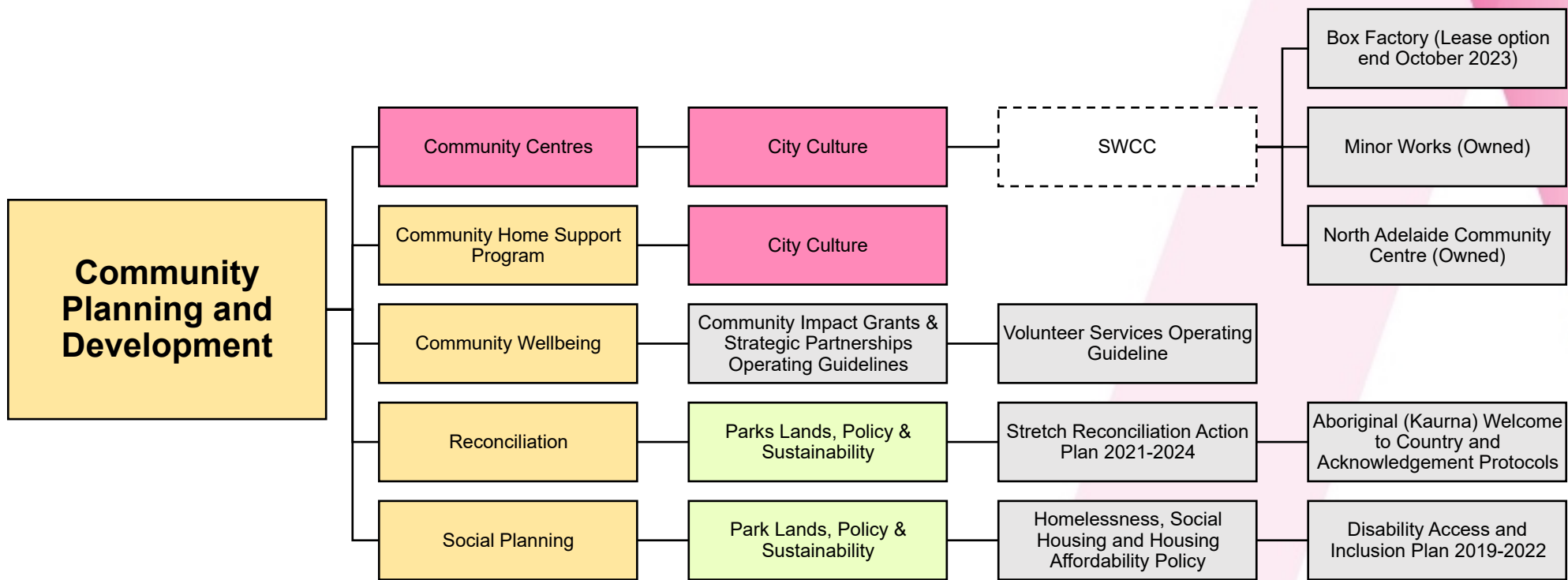


Dynamic City Culture Dashboard



City Community Services and Culture Committee

Community Planning and Development



City Community Services and Culture Committee Community Planning and Development

For review in 2023:



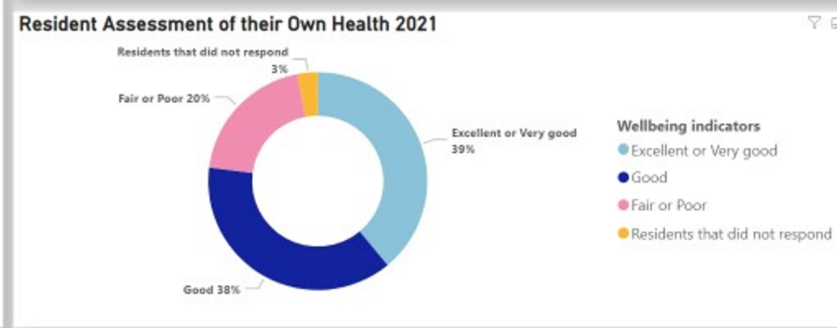
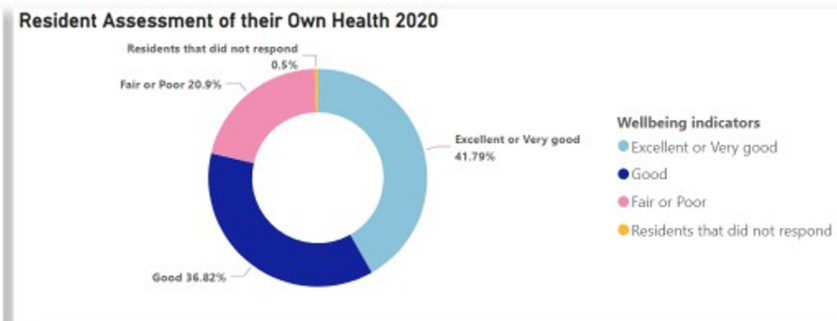
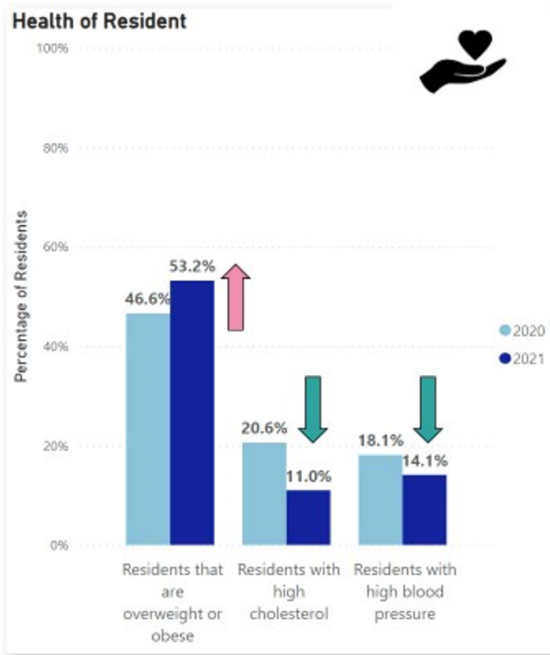
For review in
2025:





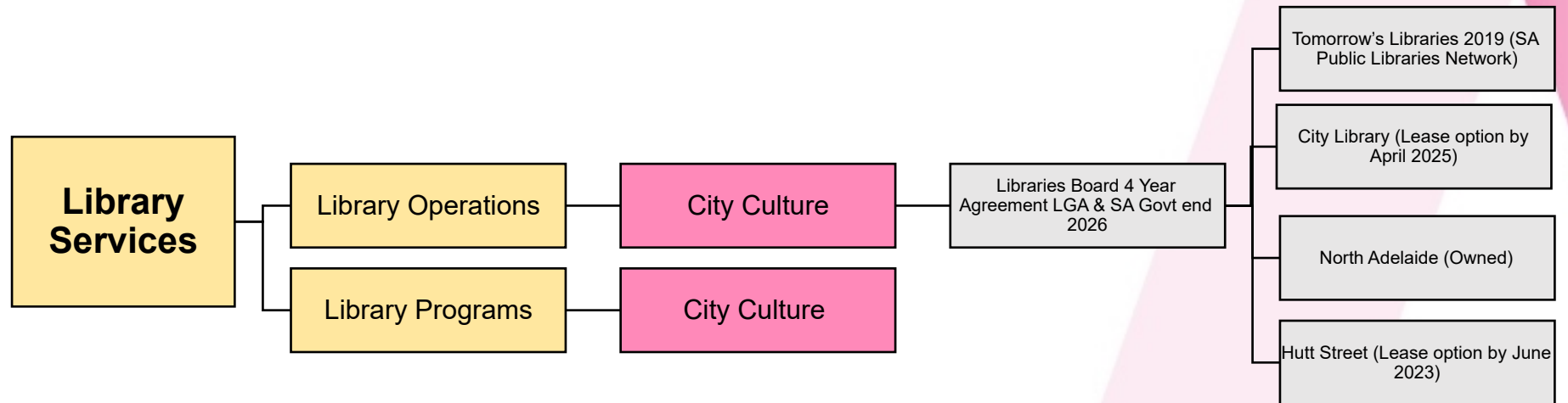
Wellbeing Dashboard

Health Indicators



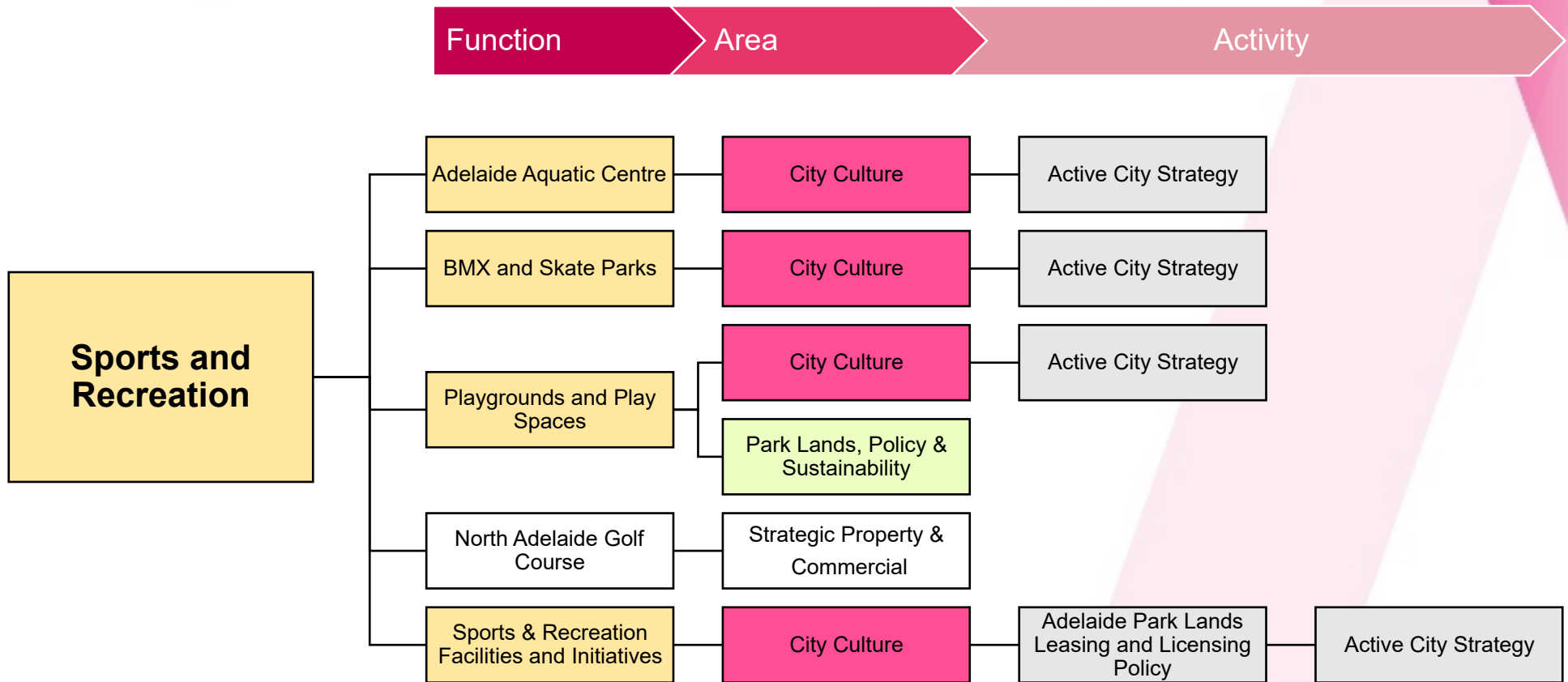
City Community Services and Culture Committee

Library Services

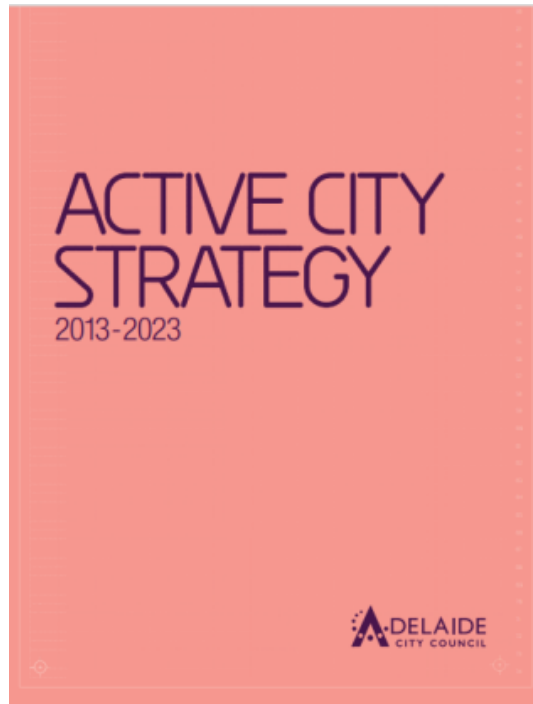


City Community Services and Culture Committee

Sports and Recreation



Ending in 2023:



For review in 2023:



ADELAIDE PARK LANDS LEASING AND LICENSING POLICY

Approved: By Council on 27 January 2016
Owner: Program Manager – Infrastructure Management
Trim: ACC2016/196470

What are your
policy and
community
outcome
priorities?

Are there any
strategic or policy
gaps?